



The UK's No. 1 manufacturer of mezzanine floors

davicon
mezzanine floors

YOUR PLATFORM FOR FUTURE GROWTH



Case Study

Bedford Project for Sainsbury's

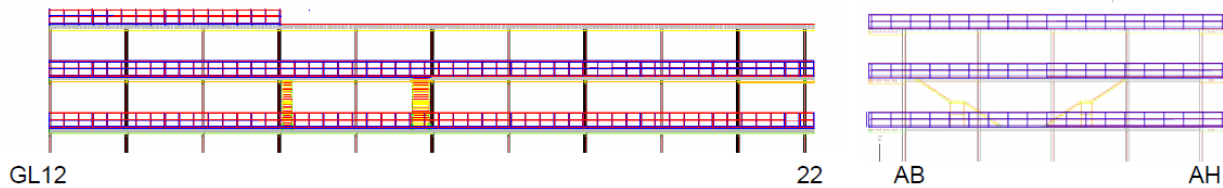
Sainsbury's

J Sainsbury plc was founded in 1869 and today operates over 1,106 supermarkets, convenience stores, online grocery and general merchandise operations. It jointly owns Sainsbury's Bank with Lloyds Banking Group and has two property joint ventures with Land Securities Group PLC and The British Land Company PLC.

Sainsbury's Bedford was an existing warehouse redeveloped for Sainsbury's. Davicon supplied the following system:

Special feature:- Hung steelwork from 15m level to ensure dock leveler was not blocked by columns to improve the operational capacity of the facility.

The contract was to install 1 no 3 tier mezzanine. The structure provides pedestrian access and supports a Garment Hanging System. The area included was between grid lines 12-22 and AB-AH with cantilevers either side of AB and AH.



Platform Size : 87m x 37m rectangular in plan

Approximate areas:-

Un-decked area

Grids 1-6/Aa-Ak 1,455 m²

Decked area

Grids 6-12/Aa-Ak (decked) Levels 1,2 & 3 1,770 m² each level

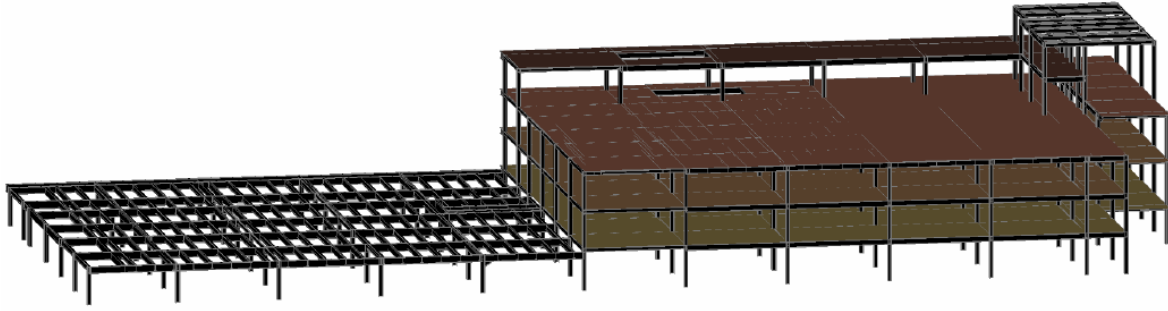
Grids 6-12/Aa-Ac (decked) Level 4 400 m²

Column Grid : Generally 8.0m x 6.0m

Height : GL 1-6; level 1; +3,000mm
 GL 6-11A level 1; +3,300mm GL 11A-12 +3,085mm
 level 2; +6,300mm +6,760mm
 level 3; +9,300mm +10,435mm

Construction Depth : GL 1-6 641mm
 GL 6-10A level 1 444mm
 level 2 444mm
 level 3 495mm





- Decking** : 38mm particle board, type P6 TG2, foil back
Total decked area 5,710 m²
- Handrail** : Tubular handrail with mid rail and 100mm high GRP kick flat is included to the perimeter of levels 1, 2, 3 and 4 and stair voids, between grid lines 6-12, total 805LM.
- Access stairs** : 1 internal triple width stair, 800/1000/800, between gnd-1st; 1st-2nd; 2nd-3rd and 3rd-4th levels, comprising 2 flights between each level with an intermediate landing, to part M c/w 32mm tubular handrail, 2 internal runs and at each outside edge (4 runs in total).
- Loads** :
- GL 1-6** : 1.0kN/m² UDL (Duerkopp)
 - Level 1 : Point loads as shown on Apex drawing 460520/07 Rev 05
 - GL 6-11A** : 1.0kN/m² UDL (Duerkopp)
 - Levels 1,2 & 3 : 2.5kN/m² UDL Imposed
0.6kN/m² UDL self weight & services
 - Level 3 : 2.5kN/m² UDL
1.0kN/m² UDL (Duerkopp)
Point loads as shown on Apex drawing 460520/07 Rev 05
0.6kN/m² UDL self weight & services
 - Level 4 : 1.0kN/m² UDL (Duerkopp)
5.0kN/m² UDL Imposed
0.6kN/m² UDL self weight & services
- Deflection** :
- GL 1-6 : L/500
 - GL 6-11 Levels 1, 2 & 4 : L/300
 - Level 3 : L/500
- Base Plates** : 500 x 500 x 20
- Column Loads** : Maximum axial load 685kN (unfactored)
- Stability** : Non-braced and portalised design.
- Surface Finishes** : Main steel – grey primer finish coat to a standard RAL colour.
Handrail – galvanised with powder coated posts.
Stairs – Zinc phosphate primer with decorative top coat; black powder coated durbar treads

