



The UK's No. 1 manufacturer of mezzanine floors

davicon
mezzanine floors

YOUR PLATFORM FOR FUTURE GROWTH



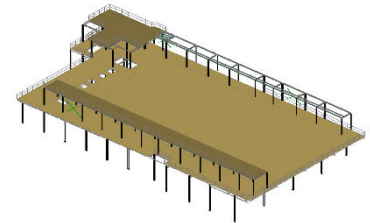
Case Study

Lutterworth Project for ASDA



Low prices and a friendly welcome: what you'll find in every ASDA store

We've got more than 500 ASDA stores across the UK – some big, some huge and some small but perfectly formed. And although they vary in size, location and the range of products and facilities on offer, you'll find the same low prices and friendly approach in every single one.



ASDA Lutterworth - Double boarded construction with an Autostore Automated Storage system specified at 18kN/m² loaded floor and very strict deflection criteria of maximum deflection of 10mm due to shuttle cars.

First Autostore installed on a mezzanine floor in the UK.

Platform Size	: 64m x 33m (2356m ² decked area)
Column Grid	: 8.2m x 5.3m (varies)
Max. column load	: 1020kN (un-factored)
Height (top of floor)	: +6.5m; +10.62m
Construction depth	: 1008mm
Decking	: 38mm P6 Particle Board TG2
Loads	: Imposed UDL 18.00kN/m ² (1,165m ²) 5.0kN/m ² (750m ²) 2.5kN/m ² (330m ² , +10620m level) Dead UDL, Self-Weight 0.7kN/m ² Dead UDL, Services 0.25kN/m ²

Point Loads : Current design will support 7.0kN on a 150mm square plate

Dynamic : 26.2kN/146 robots

Deflection : In the Autostore (18kN/m²) area all individual steel members have been designed with a maximum deflection of 10mm (imposed load) at the centre of worst case bay.

Other areas where 5kN/m² and 2.5kN/m² are required the sections are designed to L/250

Base Plates : We have included for a maximum 450mm x 450mm x 20mm thick base plates which is adequate for the size of column to be used.

Surface finishes	: Main Steel	RAL 5010
	Decking, timber	Natural
	Deck beams and handrail	Galvenised
	Handrail posts and stair treads	Black powder coated

